



The Electric Merchants' Association

Shreeji Bhuvan, 2nd Floor, R. No. 7 & 12, EMA Chowk, 51-Mangaldas Lane, Lohar Chawl, Mumbai 400002.

Phone : 022-22060625, 22088141 | Talkfree : *7202 | *7203 • E-mail: office@emamumbai.com | Website: www.emamumbai.com

AUTOMATION



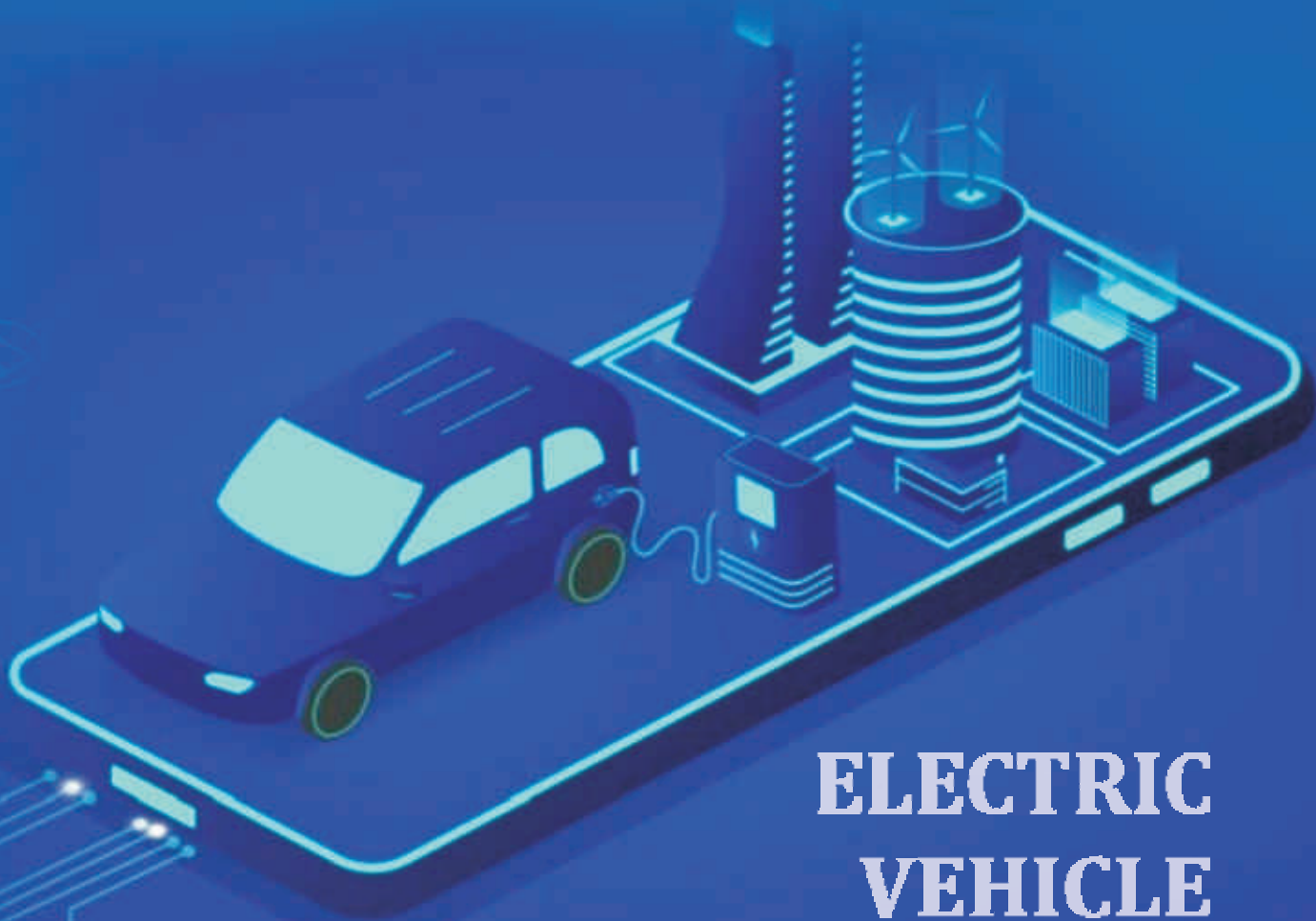
**85th HALF
YEARLY
ORDINARY
GENERAL MEETING**

23 DEC. 2021 | 4:00 PM | EMA HALL

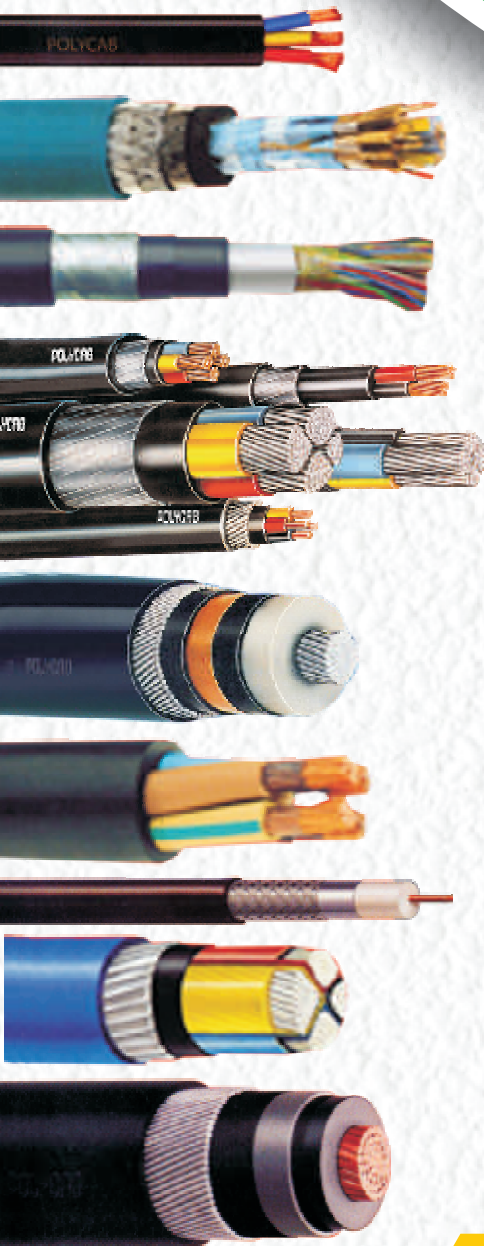
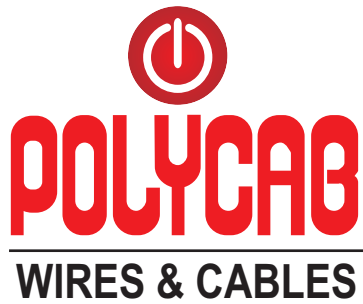
INDUSTRIAL AUTOMATION



ELECTRIC VEHICLE



Authorised Distributors :



- FR/FR-LSH-PVC INSULATED INDUSTRIAL MULTI STRAND CABLES
- PVC INSULATED INDUSTRIAL FLEXIBLE SINGLE / MULTI CORE CABLES
- 3 CORE FLAT SUBMERSIBLE CABLES / SERVICE WIRES
- HT / LT POWER AND CONTROL CABLES
- RAILWAY SIGNALLING / QUAD CABLES
- COAXIAL / TELEPHONE / LAN CABLES
- WELDING / BRAIDED CABLES
- JELLY FILLED TELEPHONE CABLES
- INSTRUMENTATION CABLES
- SPEAKER / CCTV CABLES
- RUBBER CABLES
- FIRE SURVIVAL CABLES
- LIGHTING & LUMINARIES
- SWITCHES & SWITCHGEARS
- UPVC CONDUITS & FITTINGS
- CABLE GLANDS & LUGS
- FANS & APPLIANCES

AMRISH KACHARIA

+91 9769025153



PRABHAT WIRES LLP

1st Floor, Govind Niwas, 99/101, Lohar Chawl, Mumbai 400002. Talk Free : *7444 / *7619

Tel.: +91 22 4972 4848 (10 Lines) Email : sales@prabhatwires.in

Website : www.prabhatwires.in

Lohar Chawl

EMA - 85th Half Yearly AGM

23rd Dec. 2021

Thursday at 04:00 pm

Location : EMA Office Hall

Modified
Member Details

Make Instant Enquiry /
Call in one touch

Search & Tracking
of Transportation
and Courier

Product wise -
Search Manufacturers,
Distributors
& Dealers

Find Manufacturers,
Distributors &
Dealers

Updated Member's
Database

Simplified
User Interface

Report Your Dispute /
Defaulter Request

Brand wise -
Search Manufacturers,
Distributors
& Dealers

Get Latest Updates on Notification

EMA MUMBAI APP

Update App Now

EMA MUMBAI WEBSITE

www.emamumbai.com



Scan this code & download on your phone



NOTICE OF THE 85TH HALF YEARLY ORDINARY GENERAL MEETING



Members of the Association are hereby informed that as per the requirement under the rule, 18(D) of the Rules and Regulation of the Association, the 85th Half-Yearly Ordinary General Meeting of the Members of the Association for the year 2021 year 2021-2022 will be held on Thursday, 23rd December 2021 at 04:00pm at EMA Hall to transact the following business.

AGENDA

1. To read and confirm the Minutes of 84th Annual General Meeting Held at EMA Hall on Wednesday, 30th June 2021.
2. To receive and adopt the report on the performance of the Managing Committee for the 6 (six) months period from 1st April 2021 to 30th September 2021.
3. To read and approve the list of Association's Holidays for the period January 2022 to December 2022.
4. Any other matter with Permission of Chair.

Please Note:

As per rule 20 of the Rules and Regulations of The Electric Merchants' Association, no business shall be transacted, if within 30 (thirty) minutes of the hour specified for the meeting no quorum is formed. In such a case, the meeting shall stand adjourned. An adjourned meeting shall transact business for which it is called, without the necessary quorum.

Mr. Samir Mehta / Mr. Sachin Gandhi

(Hon. Secretaries)

NOTICE OF THE 85TH HALF YEARLY
ORDINARY GENERAL MEETING

PUBLISHED BY



The Electric Merchants' Association

Shreeji Bhuvan, 2nd Floor, R. No. 7 & 12, EMA Chowk, 51, Mangaldas Lane, Lohar Chawl,
Mumbai - 400 002. Phone: 022 - 2206 0625, 2208 8141 TalkFree.: *7202 / *7203
Email: office@emamumbai.com Website: www.emamumbai.com



+91 7700065111    emamumbai

Mobile App : "EMA MUMBAI" available to download on the



EMA BANK DETAILS

Bank Name : UNION BANK OF INDIA
Branch : PRINCESS STREET
A/C. No. : 319102010077272
IFSC CODE : UBIN0531910

Bank Name : HDFC BANK
Branch : CRAWFORD MARKET
A/C. No. : 50200056831717
IFSC CODE : HDFC0000143

AFFILIATION



IMC

Chamber of Commerce and Industry

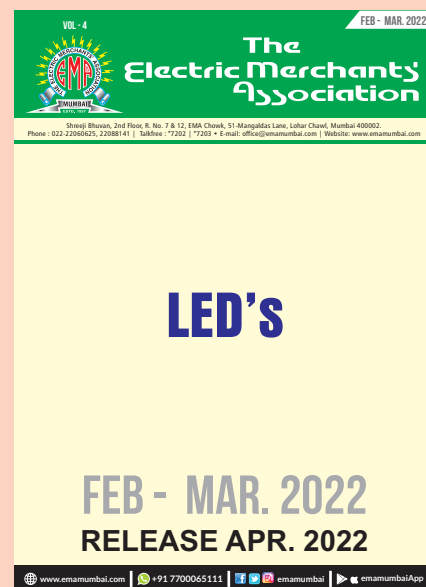


We have Upgraded

Keeping pace with time and requirements for today's need.
Easy information,
more user friendly,
additional features....
Check out the latest

emamumbai.com
[ema mumbai app](#)

TOPICS FOR OUR NEXT
BI MONTHLY JOURNALS
FOR THE YEAR





A Message from the **PRESIDENT**

Hello Friends and my fellow EMA members!!!

I would like to wish you all a **very Happy Diwali and a prosperous new year, Samvat 2078.**

May God brings joy, happiness and good health to you and your family.

This is the 2nd Issue of our Journal of my tenure on the topic of **"AUTOMATION."**

It is very enthusiastic and energetic to see our committee members dedication related to topic wise journal and their commitment towards it.

In today's world everything is getting automated or wants to be automated either it can be industrial or home.

Everything is getting Wi-Fi enabled, mobile applicable with just click of a button or with sound command. The work starts or ends as per the instructions given. Now automation has become part and parcel of our life.

From smart mobile phones to smart switches / machines, everything is getting better with evolving technology and consumer friendly.

With this I give you incite of our journal on the related topic of Automation.

Hope you all will appreciate this edition as you have liked our previous edition of wires and cables.

I wish you all in advance Merry Christmas, good health and prosperity for the coming calendar year 2022.

Thank you,

PRASHANT PARIKH

President-2021-22

INSIDES HIGHLIGHTS



Page
8-14



Page 16 & 17



Page
20 & 21



Page-26

UPCOMING EVENTS

**85th
HALF
YEARLY
ORDINARY
GENERAL
MEETING**





EA Poonawala is located at 95 Lohar Chawl in the main Electric Market in Mumbai, which is the most popular market across the country. This 45 year old company is owned and managed by



MR. EBRAHIM
POONAWALA



MR. HOZEFA
TOPIWALA



MRS. SHAHEEN
TOPIWALA

We found that the switches and home automation market is mostly run by the un-organised sector and that the shops dealing in such products have typically little or no technical knowhow of the products and the wiring needed. This causes customers many headaches and the electricians they employ to get these devices installed get them wrong many times, causing these expensive devices to fail or burn out prematurely. Additionally, there are many manufacturers for these products with lots of variations so customers are normally confused about the different features and the plethora of choices, without any advice on how to choose the right product, makes their selection process difficult.

We at EA Poonawala understand the customer point of view and aim to make the purchase and use of these products an enjoyable experience, as it should be. The first thing we do is to fully understand the products that the manufacturer has made, getting into the details of each of the features and finding differences in the products based on their unique design. Second, we conduct our own internal testing and characterize each of the products based on their performance. For example, every light that we sell has been tested with both a power meter and a light intensity meter to measure whether the manufacturer's claimed performance is actually being achieved by the product. This gives us the confidence to sell high quality products and we can therefore recommend the right products to our customers as well, and conversely steer them away from those brands that don't stand up to their claims. It is therefore only when we are satisfied with the working and customer benefit of a particular product that we offer to sell it. It is because of this internal quality process that our customers can be assured that if we keep only the best available on the market and that if do not have a product it is not made for them.

We understand customer needs and then suggest them with the best products that they can use. Using our Home Automation Solutions showcase, customers can use Touch, Remote, App & Voice to control various devices in the house. The biggest advantage of our products is that the customer will not need to make any modifications in the existing wiring. We will even explain the process to the electrician if the need arises on how to go about it.

Most of our customers are Architects, Interior Designers, Home Makers, Contractors, Electricians & end users. We have a full working demo of the products in our showroom that they may be looking for. We are also stockists so we have ready stock for all the products that a customer may need to make their dream house fully automatic with a wide variety of colors, materials and finishes to choose from.

Finally, we are the main authorised dealers for **Goldmedal Electricals** so customers can be assured both of the genuineness of all the products we sell and the ready availability of stock with **EA Poonawala**.

Exclusive Showroom
Switches, Home Automation, LED Lights & Fittings



95, Lohar Chawl, Chandabhai Bldg., Mumbai-400002. Tel.: 022-2203 5440, 2207 4651
Talk Free : *7759 • Mobile : 9223417438 • Email : eapoonawala@gmail.com • Website : eapoonawala.com



WE INVITE UPON THE NEXT GENERATION

GenNEXT

OR WE RATHER CALL IT

“YOUNG GUNS”

WHO HAVE JOINED THEIR BUSINESS AND NEEDS NETWORKING.

AGENDA IS JUST SIMPLE

“MEET & GREET”

SO, YOUNG GUNS... LET'S GATHER TO KNOW EACH OTHER.
YOUR PRESENCE IS JUST WHAT WE REQUIRE.

Day & Date : 23rd December 2021

Time : 6.30 PM Onwards

at P.J. Hindu Gymkhana, Marine Lines, Mumbai-400002.

RSVP

YOUNG GUNS OF EMA

Mr. Chintan Sanghvi	+91 98206 38937
Mr. Manav Doshi	+91 96190 35511
Mr. Parin Parikh	+91 98214 88843
Mr. Prem Vora	+91 81691 90704



The Electric Merchants' Association

ORGANISES



EMA PREMIER LEAGUE 2022

POWERED BY



POLYCAB

CO-SPONSORED BY

connectwell

THE RIGHT CONNECTION

F&B PARTNER



Diamond PIPES
GIFTING PARTNER



BOM
INFOTECH
PRIVATE LIMITED

MEDIA PARTNER

Date : 9th January 2022 | Time : 7:00 AM Onwards

Venue : Prabodhan Kridabhavan Maidan, Goregaon (W), Mumbai-400 104.

PARTICIPATING TEAM





For last 29 years, EMA has been organising sports for members and their families helping in developing virtues like hard work, sacrifice, working under pressure, improved communication skills with your mates etc. Another significant point is team sports develop the hunger for winning as a whole, building up of competitive spirit. Sports lead to a well-balanced mental and physical growth and tones up muscles and strengthen bones. For the growing children, sports play a very essential part in developing their body and mind.

Due to Covid -19 Related SOPs of maharashtra government we could not conduct the EMA PREMIER LEAGUE 2021. As we had received a overwhelming Response for the First season of EMA PREMIER LEAGUE Finally the most awaited event of the year EMA PREMIER LEAGUE 2022. The family turff cricket is here. Please find the attached Form. Request all EMA members to register themselves along with your family members.

Request all EMA members to participate in large numbers and help us make it a grand success!

Date : 9th January 2022 | Time : 7:00 AM Onwards
Venue : Prabodhan Kridabhavan Maidan, Goregaon (W), Mumbai-400 104.

For more information please contact :

Parin Parikh : +91 98214 88843 | Manav Doshi : +91 96190 35511 | Tarang Rathod : +91 9819198373

PARTICIPATION FEES

For EMA Members	: Rs. 400.00	For Guest Players	: Rs. 500.00
For Women and Children (10 years to 14 years)	: Rs. 400.00	For Spectators	: Rs. 300.00

Participation fees includes Breakfast, Lunch, Snacks & Playing Jersey.

Booking Opens: 06th December 2021 at EMA Office.

Company's Name _____

Name of the Player	Player-1	Guest Player-1*	Guest Player-2*	Spectator 1	Spectator 2
Male/Femal (M/F)					
Batsman					
Bowler					
Wicket Keeper					
Age (in Years)					
Mobile No.:					
T-Shirt Size					
Food Preference : (Jain / Non Jain)					

* has to be in Blood Relation of the Company.

What is Home Automation?

With the rapid advancements in technology taking place in the 21st century, more and more devices used in our day-to-day activities are getting integrated, intuitive and responsive. As the name suggests, Home Automation means connecting several of your home devices over a common communication channel and giving users the overall control of all the connected devices to function according to their needs and lifestyle.

What is Home Automation?

Home Automation includes connecting all your electrical devices of the home with a common central controlling unit which in automation the devices depending on the user inputs. In addition to managing the control of your electrical appliances, the concept of Home Automation further extends to managing the security systems of your home, controlling programming devices like thermostats and sprinkler systems, operating your garage doors through a one-touch action on your smartphone, etc.

Thus in short explanation, Home Automation helps you build what we call as **"Smart Home"**.

How to get started with Home Automation?

Most of the Home Automation devices available today in the market work on some of the universally accepted wireless communication protocols like Wi-Fi, ZigBee (HA 1.2) or Z-Wave.

There are also systems that require running physical wires through your home wired concealed network for all the appliances you want to get automated. These wires then finally get connected to the central hub of the Home Automation system. However, the wired systems for Home Automation as less preferred as they not only increase the cost of running wires all across your home, but also adds to the complexity of addressing faults and repair works.

On the other hand, the wireless systems reduces the complexity of setup, integration and also offers cross-compatibility among devices, thus helping users make their preferred choice.

To get started with the Home Automation, one of the key decisions is selecting the central controlling unit commonly called as the **"hub"**. The hub plays a major role as it helps in integrating various devices that work on different communication protocols, all of which are necessarily supported by the hub itself. It is quite possible that your electrical lights works on Wi-Fi, while your security system works on ZigBee. A hub that supports both of these protocols will help in integrating your light systems to your security system.

The hub also makes it possible for your lights and security system in order to respond you to various actions noted by your PIR motion sensors, door/window sensors and other sensor equipment's.

Once you have different devices that cater to various functionalities, it is not advisable to have a dedicated app individually for running all your smart appliances. Rather, a common controlling hub that helps you integrate and control the functionalities of all the devices through a common app will prove to be a better solution with ease of operation and reduced complexity.

The hub will let you integrate actions like locking your doors and turning the security mode on once all your lights go off in the night. Also in case of any intruder action it can turn all your lights of the home to RED and simultaneously notify you on your smartphone and activate the surveillance camera.



Once you have completely integrated all your smart home devices with different functionalities, the sensors within the smart devices will understand your lifestyle behavioural patterns over the period of time to give you a seamless operation.

Some of the requirements/criteria you should look for while selecting your smart home controller are:

- **Wireless Connectivity:**
- One should always look for a hub that supports most of the commonly used wireless protocols like ZigBee HA 1.2, Wi-Fi, Z-Wave, IR etc. This helps users to easily integrate devices across different brands and different functionalities.
- **Dedicated App Control:** Make sure that your hub has a dedicated app control that is compatible with your smartphone OS. This makes it easy to have control over your smart devices even from remote locations. Also the app should support various functionalities like even scheduling, taking smart actions based on surrounding conditions etc.
- **Expansion ability:** This shows the ability of your smart home controller in terms of number of devices which can be connected and controlled.
- **Alert Notifications:** Your smart home controller should be responsive to notify you through messages/calls in case of any unwanted action like intruder detection or fire catch up.

Merits of Home Automation

In addition to getting a complete reactive smart home that suits your daily lifestyle, there are lot of advantages the system offers you.

- **Energy Savings:** This is one of the major advantages of your Home Automation system. Activities like dimming the lights of your room while watching a movie, turning off the lights when the PIR motion sensor doesn't record any activity for some time, setting of event and schedules to turn your lights on/off based on the day/night times and surrounding ambient lights, thermostat controlled home temperature, etc. can easily be taken care off with your Home Automation system helping you save a considerable amount of energy.
- **Convenience and Control:** Imagine you come home in evening after a tiring day at the office and as soon as you open the living room door, the lights go on, your favourite music turns on, the thermostat sets to the comfortable temperature, your curtains go low and you are served with a fresh brewed instant shot of caffeine. Doesn't this sound as the much needed solution for your hectic routine life. All these possibilities can be easily explored with Home Automation.
- Not only this, even when you are in the office or at a distant place from the home, you can instantly know who is there at your doorbell, you can easily give access of your house through remote unlocking without the worry of managing keys. Similarly, you need not worry and keep a check every time as to have to shut off all your lights and appliances when you leave the home. Your motions sensors or one touch smartphone functionality can help you solve this issue. Moreover, if you have a voice integration with your smart home devices, just a "Goodbye" could be enough to turn everything off.
- **Easy Scalability:** The wireless connected Home Automation offers users the ease to add more devices to the network and expand it.
- **Safety and Security:** With several smart sensors in place like water leakage sensors, gas detection sensors, you can get instant notifications/texts/emails in that case and can take immediate corrective action to prevent any major accident from taking place thus ensuring the over safety of your living place. Moreover, if you have kids or elders at your place, you can remotely keep a check on their status by turning on the surveillance cameras remotely from your office.



BLACK NOVA

Panasonic



FOREST
DRAPERY HARDWARE

SONANCE
BEYOND SOUND

arcusTM
homeautomation

by **GreatWhite**
THE FUTURE OF BRIGHT



Home, Smart Home!

ASSOCIATED PARTNERS



Light and Sound Controls

smart home solutions

302, 3rd Floor, Ajmera Midtown, Near Popatwadi Lane, Kalbadevi Road, Mumbai - 400 002.

Email : sales@lightandsoundcontrols.in • Website : www.lightandsoundcontrols.in

Nirav Jariwala - 9867363285 • Hemil Jain - 8806642155



Mr. Nirav Jariwala (Partner)

Light and Sound Controls was incorporated in the year 2014, based in South Mumbai, Maharashtra, India.

We at Light and Sound Controls are committed in rendering custom-designed solutions for Lighting Automation, IOT enabled Solution, Modular

Switches, Home Theatre & Multi Room Audio, Lighting, Video Door Phones, IP Cameras, Wireless Locks, all under one single roof.

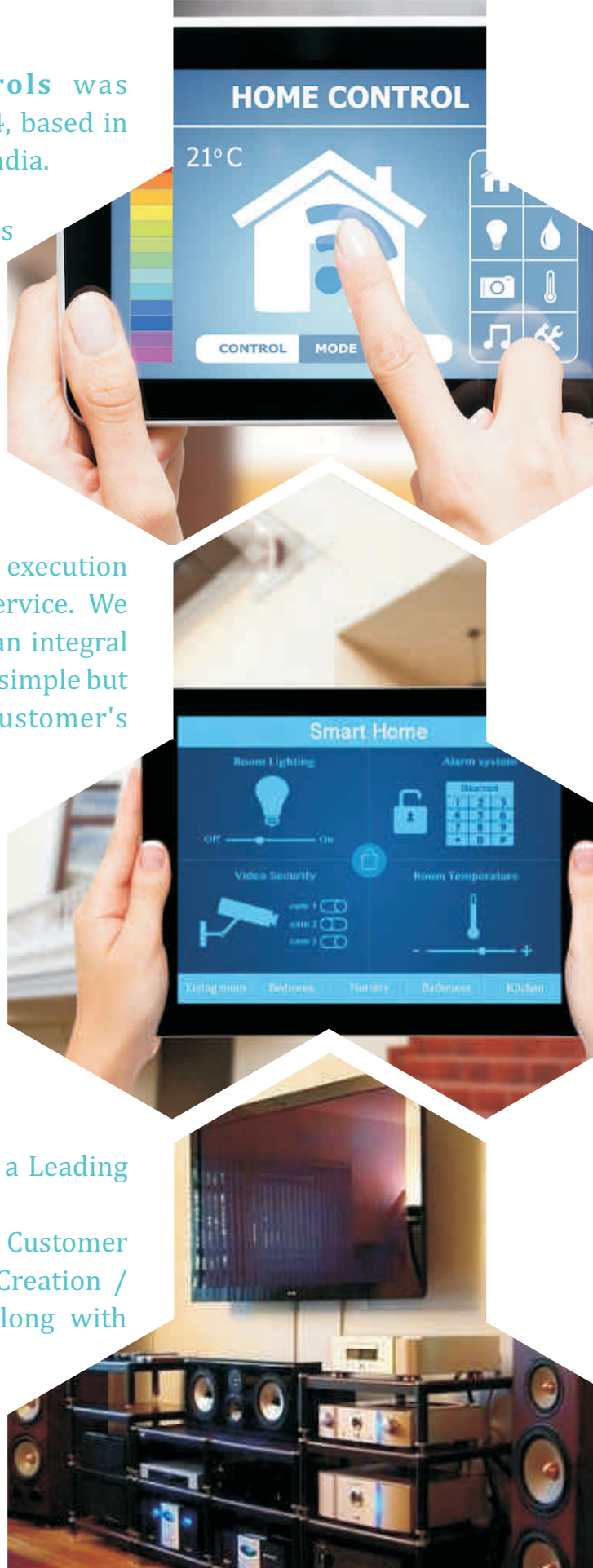
We give immense emphasis on our design and execution capabilities and most importantly, after sales service. We follow hassle-free processes to make technology an integral part of customer's day to day life and help to design simple but robust solutions strictly according to the customer's requirement and needs.

Under the superior guidance of **MR. NIRAV JARIWALA & MR. HEMIL JAIN**, We have created a benchmark in this domain due to our vast experience in this domain, which helps us to offer smooth finished products to our clients. We give immense emphasis on our design and execution capabilities and most importantly, after sales service.

Our aim is to provide High-Quality products with a Leading edge of technology at a Cost-Effective Price.

Our Core team works for the best satisfaction of the Customer round the clock where we believe in Customer Creation / Customer Maintenance / Customer Retention along with desired Quality and Delivery in a designated time.

Our solution port-folio caters to Residential, Commercial & Hospitality sector with many of our satisfied customers...



Light and Sound Controls
smart home solutions

302, 3rd Floor, Ajmera Midtown,
Near Popatwadi Lane,
Kalbadevi Road, Mumbai - 400 002.
Email : sales@lightandsoundcontrols.in
Website : www.lightandsoundcontrols.in
Nirav Jariwala - 9867363285
Hemil Jain - 8806642155



Industrial automation systems are systems used to control and monitor a process, machine or device in a computerized manner that usually fulfills repetitive functions or tasks. They are intended to operate automatically in order to reduce and improve human work in the industry.

These systems replace the repetitive and mechanical tasks mainly performed by one person and the decisions he or she makes in the manufacturing process. This is done through the use of logical programming commands and powerful machinery. Industrial automation systems bring various benefits to organizations.

replace the repetitive and mechanical tasks mainly performed by one person and the decisions he or she makes in the manufacturing process. This is done through the use of logical programming commands and powerful machinery. Industrial automation systems bring various benefits to organizations. **Productivity , Quality , Greater consistency , Flexibility , More precise information , Safety , Cost reduction.**

Some major products used in industrial automation are listed below

TIMERS

There is a list of programmable digital and Electronic Timers that have a wide set of applications. Used to measure time intervals

Time delay relays are simple, reliable, and economical, and they help in controlling an event based on time. They are very important for use in industrial control logic circuits. Time Delay Relays have various applications including flashing light control (time on, time off), engine auto-start control, furnace safety purge control, motor soft-start delay control, conveyor belt sequence delay, etc

cyclic timers that come with on/off adjustments, which trigger an alarm when a predetermined time interval is completed.

TIME SWITCH

A time switch (also called a timer switch, or simply timer) is a timer that operates an electric switch controlled by the timing mechanism.

An astronomical (or astronomic) timer calculates dawn and dusk times for each day of the year based on the latitude and longitude (or just north/central/south and time zone on more cheaply made ones), and the day of the year (month and date), programmed by the user upon installation in addition to the usual time of day, except in the case of GPS enabled astronomic timers wherein all programming is fully automatic.



Time switches can be used for many purposes, including saving electric energy by consuming it only when required, switching equipment on, off, or both at times required by some process

PROGRAMMABLE LOGIC CONTROLLER

A **programmable logic controller (PLC)** or programmable controller is an industrial computer that has been ruggedized and adapted for the control of manufacturing processes, such as assembly lines, machines, robotic devices, or any activity that requires high reliability, ease of programming, and process fault diagnosis.

PLCs can range from small modular devices with tens of inputs and outputs (I/O), in a housing integral with the processor, to large rack-mounted modular devices with thousands of I/O, and which are often networked to other PLC and SCADA systems



PLC

ALARM ANNUNCIATOR

In industrial process control, an annunciator panel is a system to alert operators of alarm conditions in the plant. Multiple back-lit windows are provided, each engraved with the name of a process alarm. Lamps in each window are controlled by hard-wired switches in the plant, arranged to operate when a process condition enters an abnormal state (such as high temperature, low pressure, loss of cooling water flow, or many others). Single point or multipoint alarm logic modules operate the window lights based on a preselected ISA 18.1 or custom sequence.

In one common alarm sequence, the light in a window will flash and a bell or horn will sound to attract the operator's attention when the alarm condition is detected. The operator can silence the alarm with a button, and the window will remain lit as long as the process is in the alarm state. When the alarm clears (process condition returns to normal), the lamps in the window go out.



PROCESS INDICATOR

A progress indicator is an element of a command-line interface, a textual user interface, or a graphical user interface that is intended to inform the user that an operation is in progress, to reassure that the system is not hung or waiting for user input, and often to provide the user with an estimate of how far through a task the system has progressed.



SWITCH MODE POWER SUPPLY

A switched-mode power supply (switching-mode power supply, switch-mode power supply, switched power supply, SMPS, or switcher) is an electronic power supply that incorporates a switching regulator to convert electrical power efficiently.

Like other power supplies, an SMPS transfers power from a DC or AC source (often mains power, see AC adapter) to DC loads, such as a personal computer, while converting voltage and current characteristics.

Switching regulators are used as replacements for linear regulators when higher efficiency, smaller size or lighter weight are required.



SENSORS

The role of a sensor in a control and automation system is to detect and measure some physical effect, providing this information to the control system. ... In fact, the integration of sensors into intelligent devices and systems has increased the capacity to measure, analyze, and aggregate data at a localized level.

Different type of sensors used in electrical automation are :

Magnetic Sensor Photo Sensor
Proximity Sensor Ultrasonic Sensor
Vibration Sensor

HMI

A Human-Machine Interface (HMI) is a user interface or dashboard that connects a person to a machine, system, or device. While the term can technically be applied to any screen that allows a user to interact with a device, HMI is most commonly used in the context of an industrial process.

Although HMI is the most common term for this technology, it is sometimes referred to as Man-Machine Interface (MMI), Operator Interface Terminal (OIT), Local Operator Interface (LOI), or Operator Terminal (OT). HMI and Graphical User Interface (GUI) are similar but not synonymous: GUIs are often leveraged within HMIs for visualization capabilities.

RELAYS

A relay is an electrically operated switch. It consists of a set of input terminals for a single or multiple control signals, and a set of operating contact terminals. The switch may have any number of contacts in multiple contact forms, such as make contacts, break contacts, or combinations thereof.

Automation is key a concept for the 4.0 industry and is a growing value among industrial companies.

According to a publication Fortune Business Insights, the industrial automation market worldwide reached 157.04 billion dollars in 2018 and is expected to reach 296.70 billion dollars in 2026, almost twice as much as a year ago.





DODIA ELECTRICALS

SINCE MORE THEN 40 YEARS



MR. HITESH DODIA

HOUSE OF SWITCHGEAR & AUTOMATION BRAND

Dodia Electricals, established in 1980 is a distinguished solution provider of Industrial Switchgear and Automation that believes in providing highly efficient and premium quality services to all their clients. With a highly motivated workforce and skilled engineers, Dodia Electricals has consistently been developing and implementing news ideas and processes in order to provide the best quality products and services. Dodia Electricals caters to both wholesale as well as retail distribution of Industrial Switchgear and Automation products. Mr. Hitesh Dodia is a qualified Chartered Accountant who has been working to build Dodia Electricals as a brand since the last 30 years. With a promising vision to provide not only the best products but also the best services to clients, he has been working improve customer experiences since the past decade. Along with a passionate team and a plethora of satisfied customers, Dodia Electricals has been growing steadily over the years and hopes to do so in the future as well.



AUTOMATION BRAND



SWITCHGEAR BRAND



Visit us at

www.dodiaelectricals.com
www.laptron-india.com

Email id

sales@dodiaelectricals.com

9/11, Ground Floor, Picket Cross Road,
Lohar Chawl, Mumbai - 400002

Whats App / Contact

+91 98338 24773

An **electric vehicle (EV)** is a vehicle that uses one or more electric motors for propulsion. It can be powered by a collector system, with electricity from extra vehicular sources, or it can be powered autonomously by a battery (sometimes charged by solar panels, or by converting fuel to electricity using fuel cells or a generator).

The focus of electrical fraternity is on the charging station for the Electric Vehicle.

A charging station, also called an EV charger or electric vehicle supply equipment (EVSE), is a piece of equipment that supplies electrical power for charging plug-in electric vehicles (including hybrids, neighborhood electric vehicles, trucks, buses, and others).

Although batteries can only be charged with DC power, most electric vehicles have an onboard AC-to-DC converter that allows them to be plugged into a standard household AC electrical receptacle. Inexpensive low-power public charging stations will also provide AC power, known as "AC charging stations". To facilitate higher power charging, which requires much larger AC-to-DC converters, the converter is built into the charging station instead of the vehicle, and the station supplies already-converted DC power directly to the vehicle, bypassing the vehicle's onboard converter. These are known as "DC charging stations". Most fully electric car models can accept both AC and DC power.

Charging stations provide connectors that conform to a variety of standards. DC charging stations are commonly equipped with multiple connectors to be able to supply a wide variety of vehicles.

Public charging stations are typically found street-side or at retail shopping centers, government facilities, and other parking areas.

Government's role in promoting Electric Vehicles

The Government of India has declared public charging stations and EV charging businesses as a de-licensed activity. The government has laid down that there should be at least one charging station in a grid of 3 km x 3 km in cities and one station every 25 km on both sides of highways. This coverage is to be achieved in cities with a population of more than 4 million and all existing expressways and important highways connected to these mega cities by 2022. The second phase (3 to 5 years) will cover big cities like state capitals and UT headquarters. There have been initiatives to set up community charging stations, as in the case of Plugin India facilitated charging stations. News reports have indicated about plans to provide solar-powered charging points at the existing fuel stations of the country. There are companies like Tata Power, Fortum and others which are engaged in the business of electric vehicle charging. They have already installed all varieties of chargers - rapid DC chargers and level 2 AC chargers for all kinds of applications - public access, workplace charging, fleet charging, residential communities, malls, highways etc and have large plans to scale up.

KNOW YOUR EV CHARGING STATIONS

AC Level One



VOLTAGE

120v 1-Phase AC

AMPS

12-16 Amps

CHARGING LOADS

1.4 to 1.9 KW

CHARGE TIME FOR VEHICLE

3-5 Miles of Range Per Hour

AC Level Two



VOLTAGE

208V or 240V 1-Phase AC

AMPS

12-80 Amps (Typ. 32 Amps)

CHARGING LOADS

2.5 to 19.2 KW (Typ. 7 kW)

CHARGE TIME FOR VEHICLE

10-20 Miles of Range Per Hour



VOLTAGE

208V or 480V 3-Phase AC

AMPS

<125 Amps (Typ. 60 Amps)

CHARGING LOADS

<90 kW (Typ. 50 kW)

CHARGE TIME FOR VEHICLE

80% Charge in 20-30 Minutes

Role of India's young entrepreneur in EV charging setup

Delhi Startup's Charging Stations Can 100% Charge Your EV in Just 50 Mins

Without a dense and reliable charging network, there can't be many **electric vehicles (EVs)** on the roads. To scale up India's transition to **EVs** in a meaningful way, a well-developed charging infrastructure is essential. The New Delhi-based EV charging infrastructure startup, **eVolt**, is working to boost adoption of **EVs** by making charging accessible and ending range anxiety.

Founded in 2019 by **Sarthak Shukla**, eVolt uses a well-connected smart charging network that is built via strategic partnerships with public and private property owners.

Through a range of intelligent wallboxes, floor-mounted and portable AC (alternating current) and DC (direct current) charging solutions for residences, offices, and fleets, eVolt aspires to help individuals, businesses and governments set up EV charging points where owners can '**refuel**' to unlock longer distances.

Broadly, eVolt's EV chargers range from residential to fleet, workplace, public and portable chargers. They are primarily developed in Europe through their technological partners, they successfully installed and sold over 10,000 chargers across the continent.

Smart EV chargers

Smart charging refers to a system where an electric vehicle and a charging device share a data connection, and the charging device shares a data connection with a charging operator.

As opposed to traditional (or dumb) charging devices that is connected to the cloud, smart charging allows the charging station owner to monitor, manage, and restrict the use of their devices remotely to optimize energy consumption.

With cloud-based solutions, only sky is the limit (pun intended). Smart EV charging service can be modified: it is effortless to add and remove features and create a system that suits your needs. New features can also be added and updated to existing charging stations. This is why smart EV charging is also future-proof. Changing demands and hopes will be turned into new features, and added into the smart system as the world keeps changing.

Electric cars connected to the grid with smart charging create a symbiosis with the power grid and they support each other. Without smart charging, this connection wouldn't exist and EVs could become a burden on the grid.



EV Charger

(HSN Code - 85044030)



Features:

- 3/6 sockets up to 16A each 240VAC
- Input supply 3Ø 415V.
- IoT enabled & can be accessed through mobile app.
- 7 inch full colour graphics LCD visible in outdoor light.
- Triple interlocking safety against short circuits.
- Certified for outdoor application and can withstand up to 2 feet water submerged.
- Vandal-proof LCD, buttons & structures.
- 100% unmanned operation guaranteed.
- Centrally cloud controlled station.
- Integrated with online payment system including wallets.
- Inbuilt protection from over current, over voltage and earth leakage.



AUTHORISED DISTRIBUTORS



AAYUSHI ENTERPRISES

Room No. 3, Ismail Bldg., 1st Floor, 33, Pathakwadi, Lohar Chawl, Mumbai-400002.

Tel.: 2208 4321 / 22 / • 40024322 • Talkfree : *7169 / *7469

Email : sales@aayushienterprises.com

Measuring Parameters

- Voltage (individual/average)
- Current (individual/average)
- Power Factor (individual/average)
- Frequency
- Power (active, reactive & apparent)
- Peak maximum demand (kW, kVA)
- Energy (active, reactive inductive, reactive capacitive, apparent)
- Run Hour (import, export and total)

Supply Voltage

Frequency	50/60 Hz
Input supply	415VAC

Display

Display	7 inch LCD view in full color
Colour	RAL702I, RAL7035, RAL9010

Output Specifications

Communication	Ethernet/Fiber
Relay	3 Nos., 90A, latch

Mechanical Specifications

Mounting	Surface mounting
Weight	38.5 Kg
Enclosure Material	MS power coated

Order Code

NEV4I50301	415V 3ph, Ethernet connected, cloud based, 3Nos. socket
NEV2300301	230V 1ph, Ethernet connected, cloud based, 3Nos. socket
NEV4I50302	415V 3ph, Fiber connected, cloud based, 3Nos. socket
NEV2300302	230V 1ph, Fiber connected, cloud based, 3Nos. socket
NEV4I50303	415V 3ph, Wi-Fi and Ethernet connected, cloud based, 3Nos. socket
NEV2300303	230V 1ph, Wi-Fi and Ethernet connected, cloud based, 3Nos. socket
NEV4I50601	415V 3ph, Ethernet connected, cloud based, 6Nos. socket
NEV4I50602	415V 3ph, Fiber connected, cloud based, 6Nos. socket
NEV4I50603	415V 3ph, Wi-Fi and Ethernet connected, cloud based, 6Nos. socket

Input Specifications

Electrical Connection	3Ø - 4 wire/1Ø - 2 wire/4Ø - 4 wire
Input Voltage Range	0-500 VAC (L-L)/0-300V (L-N)
Frequency	45-65 Hz
Resolution	Energy: 0.1 kWh Power factor: 0.001 Frequency: 0.01 Hz Voltage: Autoranging Current: Autoranging Power: Autoranging

Accuracy	Voltage ±0.5% of F.S Current ±0.5% of F.S Power Factor ±0.5% of F.S Frequency ±0.1% of F.S Power (active, reactive and apparent): 1% Energy (active, reactive and apparent): Class I
----------	---

Burden	Voltage: 0.2 VA max. per input Current: 0.2 VA max. per input Aux. supply: 3 VA max.
--------	--

Environmental Specifications

Temperature	Operating : -10° to 55°C Storage : -20° to 75°C
Humidity	< 95% RH
Ingress Protection (IP Rating)	Confirms to IP54

AUTHORISED DISTRIBUTORS



AAYUSHI ENTERPRISES

Room No. 3, Ismail Bldg., 1st Floor, 33, Pathakwadi, Lohar Chawl, Mumbai-400002.

Tel.: 2208 4321 / 22 / • 40024322 • Talkfree : *7169 / *7469

Email : sales@aayushienterprises.com

IMPORTANT NEWS

Farm law repeal means for farmers, govt, Opposition and PM!!!

Prime Minister Narendra Modi has announced the repeal of the three contentious farm laws, which had witnessed protests from farmers, mainly from Punjab and Haryana, on the borders of Delhi for more than a year. A look at why and how the government had pushed these laws, why it has now withdrawn them, and the implications of the move, politically and economically.



What were the farm laws that have been repealed?

They are:

The Farmers Produce Trade and Commerce (Promotion and Facilitation) Act, 2020, which is aimed at allowing trade in agricultural produce outside the existing APMC (Agricultural Produce Market Committee) mandis;

The Farmers (Empowerment and Protection) Agreement on Price Assurance and Farm Services Act, 2020, which seeks to provide a framework for contract farming;

The Essential Commodities (Amendment) Act, 2020, which is aimed at removing commodities such as cereals, pulses, oilseeds, edible oils, onion and potato from the list of essential commodities.

Finance Minister Nirmala Sitharaman had announced these laws as part of the third tranche under Aatmanirbhar Bharat Abhiyaan to support the economy during the fight against Covid-19. On June 3, 2020, the Union Cabinet chaired by Modi approved the three laws, then in the form of ordinances. Two days later, the President promulgated the ordinances. During the Monsoon Session of Parliament, the government introduced Bills to replace the ordinances, which were eventually passed.

How is the Opposition impacted politically?

No Opposition party can claim credit for forcing the government's decision. The credit lies solely with agitating farmers, who dug their heels in through winter, summer and rains for a year now. The issue the Opposition had raised was that such significant legislation was being pushed through Parliament without being referred to a parliamentary panel for scrutiny. But no Opposition party pursued the cause through any sustained agitation outside Parliament like the farmers did.

The Opposition parties did lend their support to the agitating farmers against the government's attempts to create a different narrative. As Rahul Gandhi, Mamata Banerjee and other leaders maintained continued support to the farmers, the government tried to discredit their support as being against the national interest. The PM's announcement to repeal those laws, in a way, flies in the face of this year-long attempt, and instead adds to the impression that the Opposition was lending its voice to a popular sentiment. This impression will, in the future, take the sting out of attempts by the BJP to discredit the Opposition as being against a public cause.

Politically, how does the about-turn impact the government, the BJP, and the PM himself?

In the immediate term, the repeal exposes the government to charges of being on the wrong path and against popular sentiments, notwithstanding its claims to the contrary. Given that the Budget this year had announced a clutch of privatisation and monetisation measures, the repeal exposes the government to the risk of protests from employees' organisations to try and get these moves stalled, too.

This is the second rollback by the NDA government — the first was of land acquisition reforms in 2015 — and on both counts the issue related to rural farmers. This will add fuel to the Opposition's constant allegation that the BJP's moves are not in tune with the needs of rural farming communities. Given that it took the government a year to realise the socio-political costs, the repeal also signals a weakened political feedback mechanism within the party.

For the Prime Minister, his announcement appeared to suggest that it was a tactical retreat. His suggestion was that the three laws were in the interests of farmers, and that his decision to repeal them was in the national interest, although he did not elaborate how a decision in the interest of farmers was being repealed in the national interest. The PM was clearly balancing his political posture that has thrived on the image of a strong and decisive leadership. While the Opposition has cheered the move, it has disappointed the PM's cheerleaders who had backed these reforms for the last one year.

How does the repeal impact the political economy of rural India?

There may be some deficiencies in the exact design and mechanism of the reforms proposed in the three farm laws, but most advocates of agricultural reform would agree that they were in the right direction. That the government chose to push these reforms through its own set of consultations left many stakeholders feeling left out, and created a backlash. The repeal underlines that any future attempts to reform the rural agricultural economy would require a much wider consultation, not only for better design of reforms, but for wider acceptance. The repeal would leave the government hesitant about pursuing these reforms in stealth mode again.

President Ram Nath Kovind conferred honour to the cities for being clean and garbage-free in **'Swachh Survekshan 2021' at an event (Swachh Amrit Mahotsav)** organised by the Ministry of Housing and Urban Affairs (MOHUA) in the national capital on Saturday 20th November 2021.

To applaud the achievements of best performing states & cities in making India clean, 4320 cities have been evaluated across parameters.

Reportedly, Indore has now been voted as the cleanest in India for 5th time in a row. President Ram Nath Kovind conferred Surat (Gujarat) and Vijaywada (Andhra Pradesh) for being the country's second and third cleanest cities, respectively.

The Centre awarded Varanasi first position in the cleanest Ganga town category in the annual cleanliness survey 2021.

Another major winner in the annual cleanliness survey was Chhattisgarh as it has been ranked as the cleanest state in the country.

As part of Swachh Survekshan 2021, a new category of awards titled 'Prerak DAUUR Samman' was introduced which has a total of five additional sub-categories which are Divya (platinum), Anupam (Gold), Ujjawal (Silver), Udit (Bronze), and aaRohi (Aspiring).

Meanwhile, the Swachh Bharat mission has been transforming India's urban landscape for the past seven years. Today, 129 Swachh

Survekshan Awards, 12 Safai Mitra Suraksha Challenge awards, and 152 awards for garbage-free cities were conferred today at Swachh Amrit Mahotsav 2021.

Swachh Survekshan 2021: Here is the list of cleanest cities with a population of over 10 lakh

RANK	CITY NAME	SCORE
1	Indore	5618.14
2	Surat	5559.21
3	Vijayawada	5368.37
4	Navi Mumbai	5307.68
5	Pune	4900.94
6	Raipur	4811.40
7	Bhopal	4783.53
8	Vadodara	4747.96
9	GVMC Vishakhapatnam	4717.92
10	Ahmedabad	4690.55
11	Rajkot	4595.91
12	Lucknow	4586.17
13	Greater Hyderabad	4551.00
14	Thane	4534.40
15	Gwalior	4523.52
16	Chandigarh	4277.29
17	Nashik	4248.05
18	Ghaziabad	4220.90
19	Pimpri Chinchwad	3874.20
20	Jabalpur	3856.45



The Electric Merchants' Association

Thanks for the overwhelming response

Let's Cruise Picnic-2022



MUMBAI

HIGH SEAS

MUMBAI

17TH FEB 2022 • 18TH FEB 2022 • 19TH FEB 2022

POWERED BY

VIHAN

SPREAD THE LIGHT

IN ASSOCIATION WITH



P-LITE



Shah & Shah
Delivering Power, Providing Solutions

Matic+
Willing to Perform

POLICY

We at EMA care committed to achieve satisfaction of our members by all such means as may be deemed necessary within legal framework and acceptable to all interested parties. We will try to achieve our objectives by adhering to applicable requirements and try to continually improve the effectiveness of the quality management systems

VISION

- 1) To become a one stop solution for the members to resolve all their business related issues.
- 2) To be associated with other similar institution and other allied associations across the globe for the betterment of the members.

SCOPE

Safeguarding interest of the Members, keeping them up to date with relevant information, providing a platform to the members for exchange of ideas, resolving trade disputes of the members providing them with legal administrative and technical support, engaging them in various recreational activities.

ACHIEVEMENT

Provided a meeting place for conference, exhibition, demonstrations, lectures, seminars and other relevant functions for exchange of views of members and other interested parties.

PURPOSE

To promote co-operation among persons, firms, companies connected with the electric trade and industry in India, whether as importers, exporters, wholesale or retail dealers, manufacturers, contractors, consultants or commission agents. With a view to their adopting a common policy and collectively taking such steps as may be considered

necessary or expedient to further and safeguard the interest of trade and industry.

To frame and from time to time update and try to enact rules and bye-laws for the benefit of and binding on the Association and/or its members and non-mebers dealing with the members to promote and safeguard the interest of the Association and its members.

To elevate standard of business moral and promote system of preferential treatment to the members of the Association.

Providing facilities and machinery for the settlement of disputers by arbitration.

To take such steps which may be deemed necessary for promoting, supporting or opposing legislation or actions by the Government or any departments thereof or by any local body or bodies and in general to take the initiative to safeguard the interests of the Electrical Trade and Industry.

To Organise in a calendar year at least one :

- Excursion
- Factory Visit
- Social Family Gathering
- Sports Event
- Medical Seminars
- Medical Camp for Members and Staff.
- Technical Seminar
- Taxation Seminar

To acquire, verify and circulate relevant notifications issued by regulatory authorities among the members within two weeks of their receipt.

To educate general public including members by all suitable means on the advantages and the utilities of electricity, electrical appliances and articles used for domestic, commercial and industrial purpose twice a year.

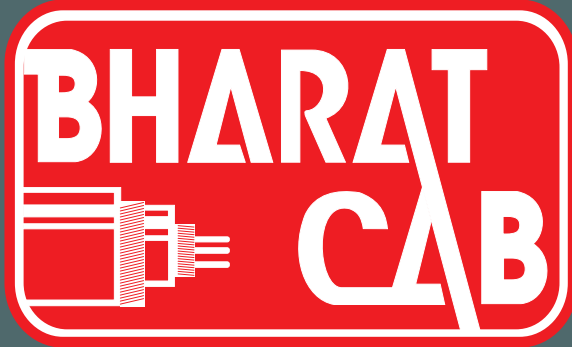
Establishing, equipping and maintaining a library for the benefits of the members.

PURPOSE

OBJECTIVE

EMA POLICY, VISION & OBJECTIVE

AN ISO 9001-2000 Co.



WIRES & CABLES

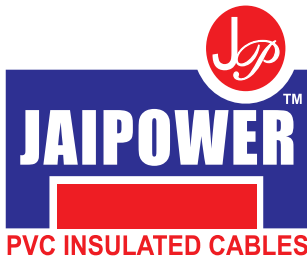
CABLES
CONDUCTORS
JOINT KITS



WIRES & CABLES



HEAT SHRINKABLE JOINTING KITS



HT & LT Cables

Aerial Bunched Cables

AAAC / AAC / ACSR Conductors

Chemical Earthing Electrode
(Make: Guduchee)

AJAY SABOO



Indian-Cab Corporation



11/1, Takwadi, Kalbadevi Road,
Opp Edward Cinema, Mumbai - 400002.
Tel. : 2208 8110 / 2206 0312 / 13
Email : indiancabcorporation@gmail.com
ajaysaboo@gmail.com
Website: www.bharatcab.in

NEW LIFE MEMBERSHIP

M/s. Rishab International

2nd Floor, Room No. 1, 133 Gopal Niwas,
Princess Street, Kalbadevi Road,
Mumbai – 400 002.

M/s. On Bright

1C, 133, Floor Basement, Gopal Niwas,
Lohar Chawl, Shamaldas Gandhi Marg,
Kalbadevi, Mumbai – 400 002.

The Electric Merchants' Association

Mr. Bhavesh Jain

Tel. No.: 022-39567045 • Mob. : 9769897058
Email : bhaveshjain11@gmail.com
GST No. : 27AGAPJ0332Q1ZE

Mr. Shamim Khan

Mob. : 9833946838
Email : shamin.khan063@gmail.com
GST No. : 27ASYPK4704B1ZN

NEW ANNUAL MEMBERSHIP

M/s. BDM Infotech

B-202, 2nd Floor, Om Shiv Kripa Building,
Off Mathuradas Road, Laxmi Narayan Lane,
Kandivali (West), Mumbai – 400 067.

Mr. Basudev Mahato

Mob No. : 9967937930
Email : basudev@badminfotech.com
GST No. : 27AINPM4067E1ZZ

CHANGE OF ADDRESS

Old Address

M/s. VIKRAM ENTERPRISES

Shri Hanuman Building, 2st Floor, Office No. 5,
2nd Picket Road, Opp. L.T. Marg Police Station
Mumbai – 400 002.

M/s. TARGET ELECTRICALS

7A, Tavawalla Building, Ground Floor
147, Lohar Chawl, Mumbai – 400 002.

M/s. OM ENTERPRISES

Room No. 21, Jairaj Bhuvan Chawl,
New Mill Road, Kurla (W),
Mumbai – 400 070.

New Address

M/s. VIKRAM ENTERPRISES

Office 37A/B 1st Floor, Mulji Jetha Co-op Hsg.,
185/187 Princess Street, Mumbai – 400 002.
GST No. 27AACPM0663M1ZJ

M/s. TARGET ELECTRICALS

124, Anandraj Industries Premises,
Sonapur Lane, Bhandup (W), Mumbai – 400 078.
Mob. No. 8104422522 Tel No. 022-49601146.
GST No. 27AABPK1784G1ZR

M/s. OM ENTERPRISES

Block No. E-8, Plot No. 235,
2nd Floor, Bhumi World Industrial Park, NH-03,
Pimpas Village, Bhiwandi, Dist. Thane – 421311.
GST No. 27ADDPT5796Q2ZC

CHANGE OF COMPANY NAME

Old Company Name

M/s. SHAH ENGG. EQUIP CORPN.

New Company Name

M/s. Shah Engineering Co.

64, Nagdevi Street, Mumbai – 400 003.
GST No. : 27AAPFS7785R1ZQ

CHANGE OF NOMINEE

Old Company Name

M/s. ALTRA- LITE LUMINAIRES

112, Sati Industrial Estate, I.B. Patel Road
Goregaon (East), Mumbai – 400 063.
GST No. 27ACMPR7430H1Z8

Old Company Name

M/s. S. KANT & CO.

19/21, Picket Cross Road, 205-206 Kapol Bank
Building, 2nd Floor, Lohar Chawl, Mumbai – 400 002.
GST No. 27AAGPS3326P1Z5

Old Nominee : Shantilal Devji Rambhia

New Nominee : Mitesh V. Chhadva

Old Nominee : Mr. Hashmukh H. Sanghavi

New Nominee : Mr. Ruhil H. Sanghavi

TERMINATION OF ANNUAL MEMBERSHIIPS

Following members ceases to be members of **The Electric Merchants' Association**
with effect from 01/04/2021

Sr. No.	Name of the Company	Name of the Nominee	Membership No.
1	Allied Electricals	Dilip Gopinath Sakre	A/1656/O
2	Altop Controls (Bombay)	Baboo Manubhai Nagarsheth	A/0078/O
3	Anil Electricals (Goregoan)	Jaswantbhai Panchal	A/1654/O
4	Atlas Switchgear Mfg. Co. Pvt. Ltd.	Bhadrakumar Manilah Shah	A/0003/O
5	Atul Enterprises (Sujal Mansion)	Atul Nanalal Meghani	A/0129/O
6	Bhalaria Cork & Gasket Company	Rajendra Ramanbhai Bhalaria	B/0080/O
7	Chandni Corporation	Pravinchandra C Shah	C/0068/O
8	Dipti Trade Links	Dipti Rajiv Jadhav	D/1645/O
9	Grois Energy India	Nishit Kishor Shah	G/1670/O
10	H. K. Shah & Company	Kirtibhai H. Shah	H/0002/O
11	Jdianm Lighting Pvt. Ltd.	Nayan Jagmohan Lalani	J/1739/O
12	LPA India	Ilyas Ahmed Patel	L/1644/O
13	M. R. Engineer	Mrs. Jaya Rajendra Shah	M/0127/O
14	M. S. Traders	Samir Prakash Parikh	M/0118/O
15	Mark Enterprises	Nikhil Jain	M/1653/O
16	Nilme Electric	Nilesh G. Pancholi	N/1636/O
17	P. K. Trading Company	Paresh S. Chheda	P/0114/O
18	Paras Switchgears And Controls	Sudhir Dhirajlal Gandhi	P/1638/O
19	Plastech Instruments	Ajay K. Bhawsar	P/1720/O
20	Power Solutions (India)	Nikesh Kushalraj Punamiya	P/1755/O
21	Pragati Electricals	Ghanshym Chaudhari	P/1657/O
22	Sheth Brothers	Mahendra T. Sheth	S/0134/O
23	Suchit Marketing	Deepak N. Shah	S/1711/O

Mr. Samir Mehta / Mr. Sachin Gandhi
(Hon. Secretaries)

Mr. Samir Mody/Mr.Sanjay Shah/Mr. Nayan Pandya/Mr. Hozefa Topiwala
(Chairmen Membership Growth Committee)

TARIFF FOR EMA HALL

Time for 11:00 am to 6:00 pm

One Day ₹ 6,050/-

Two Day ₹ 10,000/-

Three Day ₹ 15,000/-

Time for 11:00 am to 2:00 pm or from 3:00 to 6:00 pm

For 3 Hours Sessions ₹ 3,000/-

The Association is please to inform all members that EMA Hall is available on Rent. The tariff for the same has been fixed against refundable Deposit Rs. 2500.00 (Two thousand five hundred only)

IDEAL FOR : SEMINAR | EXHIBITION | DISPLAY MARKETING EVENTS | MEETING CONFERENCE

Hall booking will be subject to availability of date

The Tariff for the Distribution of Price List / Business Promotional Material / Information / Brochure / Pamphlets leaflets etc have fixed as under

FOR PRICE LIST DISTRIBUTION

One Page	Two Pages	Three Pages	Four Pages	Five Pages
₹ 1,500	₹ 2,000	₹ 2,500	₹ 3,000	₹ 3,500

Beside, if there are more than 5 pages, the Additional cost will be ₹ 1,000 per pages. Pls send 1050 copies for Distribution purpose.

WEBSITE ADVERTISEMENT TARIFF FOR ONE YEAR

No	CATEGORIES	PRICE ₹	No	CATEGORIES	PRICE ₹
1	Premium Position Advt. on Home Page	1,10,000	5	Category Sponsorship	₹ 5,000
2	Big Banner Advt. on Home Page	60,000	6	Brand Listing on Just Click+1 Co. Listing	₹ 1,500
3	Small Banner Advt. on Home Page	15,000	7	Company Listing under Category	₹ 700
4	Prime Just Click Sponsorships	50,000	8	Price List on Just Click	₹ 1,500

TARIFF FOR ADVERTISING IN BIMONTHLY JOURNAL

No	CATEGORIES	PRICE ₹
1	Full Page	5,000
2	Half Page	3,000
3	Article + Advertisement (Full Page)	7,000
4	Article + Advertisement (Half Page)	5,000
5	2 Full Page Advertisement	9,000
6	2 Half Page Advertisement	5,000
7	3 Full Page Advertisement	12,000
8	3 Half Page Advertisement	7,000
9	6 Full Page Advertisement	24,000
10	6 Half Page Advertisement	14,000
11	Inside Front Full Page For 1 Year	1,25,000
12	Inside Back Full Page For 1 Year	1,00,000
13	Back Cover For 1 Year	2,00,000
14	Plastic Folder (Front & Back) For 1 Year	2,50,000



PLEASE NOTE :

Non-Members will be charged 25% extra on all the above tariffs.
18% GST will be charged extra as applicable on all above tariffs.



Ronak Switchgear & Automation



A **Ketan Dodia** Venture, is a complete solution provider in the world of Innovation & Automation. Mr. Ketan Chimanlal Dodia is a qualified engineer with his vast experience of more than 25 years in the field of Industrial Automation & Switchgear Products. He has started Ronak Switchgear & Automation with a strong vision and aim to provide the best automation products and solutions.

We cater to the wholesale & distribution segment of the Automation Industry with an extensive array of Industrial Switchgear & Automation products like Micro Switches, PLC Systems, Electric Relays, Power Contactors, Proximity Sensors, Capacitors, Limit Switches, Temperature Controllers, Safety Limit Switches, Pull Cord Switches, Dehumidifiers etc.

We are authorized distributors of the top International Brands like **OMRON, SELEC, MITSUBISHI, HONEYWELL, SIEMENS, MENNEKES, SCHMERSAL, MULTISPAN, GIC & ORIGIN.**

The Company is enjoying a steady growth due its quality product offering and customer satisfaction. Our dedicated and passionate team is the key to our successful growing business.

INDUSTRIES WE CATER TO :



PHARMACEUTICALS



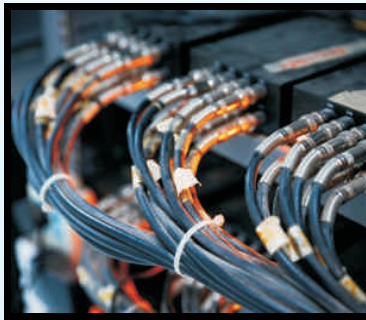
PLANT-INDUSTRIES



Oil-Gas



MARINE



TELECOM-broadband



CONSTRUCTIONS

Shop No 6/7/8, Gr. Flr, 468 Bharat Bhuvan, Junction of Kalbadevi & Princess Street, Opp Bank Of India, Mumbai - 400 002

Tele : 022-22064800 / 01 / 02 / 03 Talk Free : 7316

Website: www.ronakautomation.com

Email: ketandodia@ronakautomation.com

Authorized Distributor:

OMRON Honeywell SIEMENS MENNEKES SCHMERSAL selec MITSUBISHI ELECTRIC GIC origin MULTISPAN

RONAK SWITCHGEAR & AUTOMATION

(A KETAN DODIA VENTURE)

**AUTHORISED
DISTRIBUTOR**

Honeywell

Limit Switches

OMRON

Intelligent Controllers
& Sensors

SELEC

Creating Best Value

P.F, PLCs, Relays
Temperature Controllers
& AC Drives



Power Supply



SCHMERSAL

THE DNA OF SAFETY

Pull Cord Switches
& Limit Switches



SIEMENS

Ingenuity for life

Switchgears & SMPS



MENNEKES®

Plugs for the world

Plugs, Sockets
& Connectors



MITSUBISHI ELECTRIC

Switchgears

MULTISPAN

Temperature Controller
& Digital Counters

Shop No 6/7/8, Gr. Flr, 468 Bharat Bhuvan, Junction of Kalbadevi & Princess Street, Opp Bank Of India, Mumbai - 400 002

Tele : 022-22064800 / 01 / 02 / 03

Email: ketandodia@ronakautomation.com

Website: www.ronakautomation.com



PRECISION[®]

PIPES

ELECTRICAL PIPING SYSTEMS



ROUND CONDUIT uPVC, G.I. & M.S. PIPES & FITTINGS

CORRUGATED FLEXIBLE CONDUIT PIPES & FITTINGS

uPVC MINI / MAXI TRUNKING PIPES & FITTINGS

uPVC PANEL TRUNKING

**Har Building ki Lifeline
PRECISION PIPELINE**

electrical@precisionpipes.com

Customer Care : +91 77150 00015